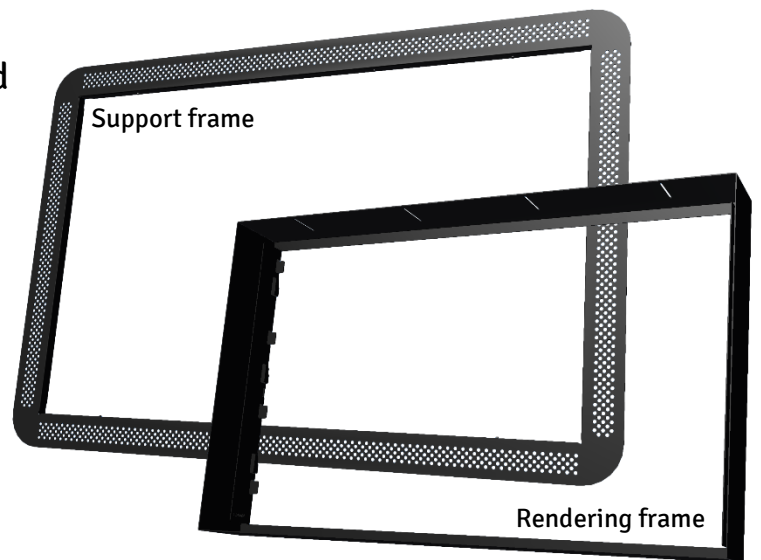


Flush mounting of MOStroon TSPC

Mounting instructions (for installation into a (stone)wall - with final plaster work)

Required material

- Flush mount-mounting frame: consisting of support frame and rendering frame
- TSPC
- screws included in the delivery
- 2mm inbus screwdriver
- Polyurethane mounting adhesive
- air level
- plastering material, we recommend plaster
- with synthetic additive, e.g. Knauff Uniflott®
- vacuum gripper (to insert the display)



Flush mounting of MOStroon TSPC

Mounting instructions (for installation into a (stone)wall - with final plaster work)

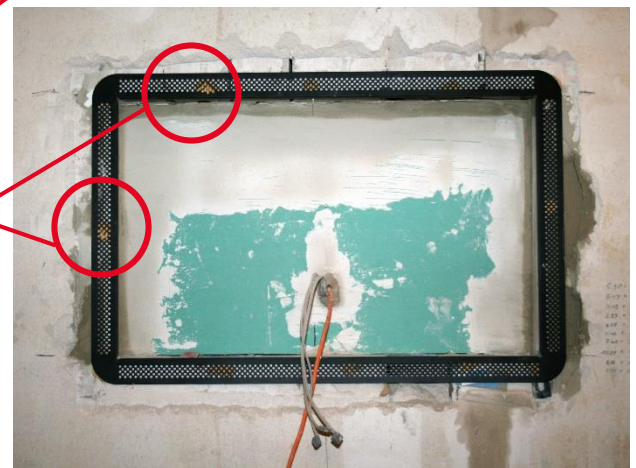
1 Inserting the support frame:

Install a mounting hole into the wall corresponding as per the respective drawing for each display.

In case of installation in an existing environment: **Remove the plaster surrounding the mounting hole so that the support frame (frame with holes) can be glued directly to the (stone)wall.**

Keep **230 V connection and network cable** at hand.

Insert the support frame (frame with holes) into the mounting hole and **fix it with Polyurethane mounting adhesive.** Make sure to set several glue points to ensure firm fixation.



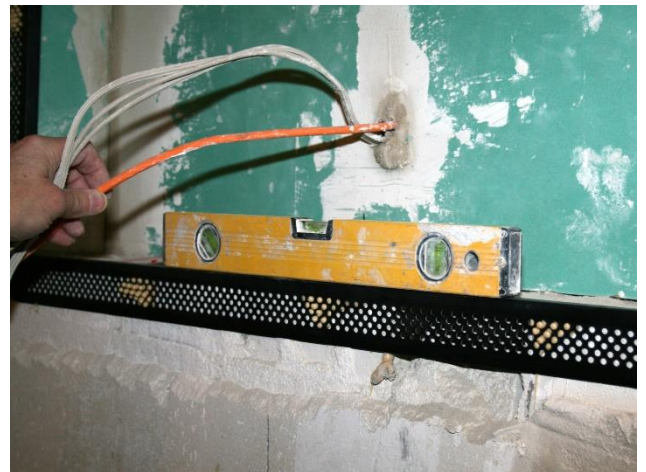
Flush mounting of MOStroN TSPC

Mounting instructions (for installation into a (stone)wall - with final plaster work)

2 Alignment of support frame

Align the support frame to ensure a straight position of the display. If necessary, put cotters underneath it to ensure a balanced position in all directions.

Let the glue dry completely so the display remains aligned.



Flush mounting of MOStroN TSPC

Mounting instructions (for installation into a (stone)wall - with final plaster work)

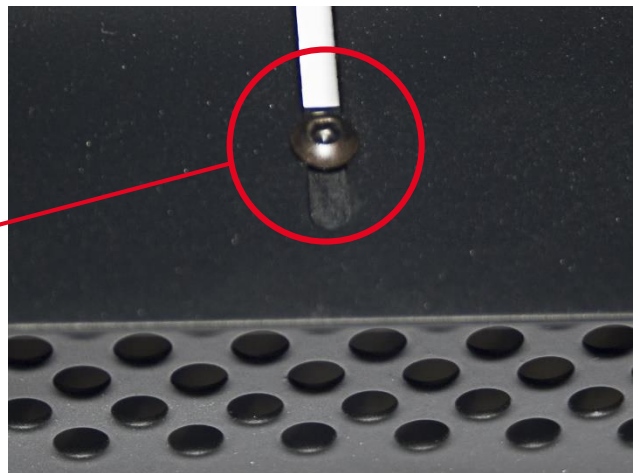
3 Flush insertion:

Insert the rendering frame into the support frame. Insert the screws into the respective threads and tighten them loosely.

Installation into an already plastered wall: Align the rendering frame with the adjacent areas. **Carefully check all sides so that the front of the frame is on an even level with the plaster.**

If the front of the rendering frame is levelled with the plaster, **tighten the screws completely with the 2mm Inbus**, thus fixing the frame tightly.

If the display is installed into a new wall, align the frame in all directions and use it as a scanning edge for plastering.



Flush mounting of MOStroN TSPC

Mounting instructions (for installation into a (stone)wall - with final plaster work)

4 Plastering the frame:

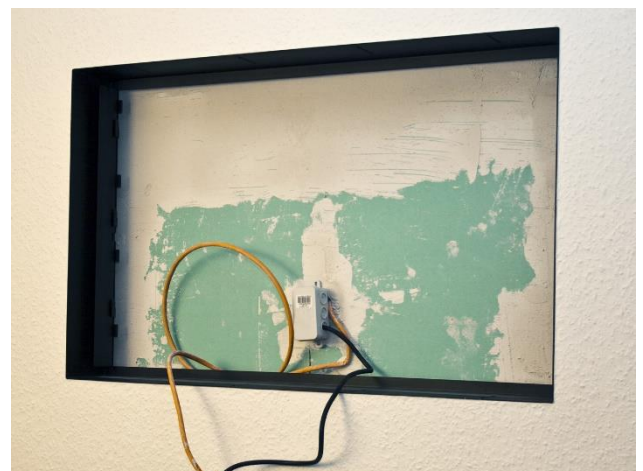
The support frame (frame with holes) has to be completely covered by plaster.

Use the edge of the support frame as a scanning edge.

Afterwards clean the edge of the support frame.

Depending on the condition of the wall, refine the plastering. To finalize the installation smoothe the plaster, decorate or paint the wall.

Completely built-in flush mounting frame. Here: wall decorated with ingraned wallpaper, close to the edge of the frame.

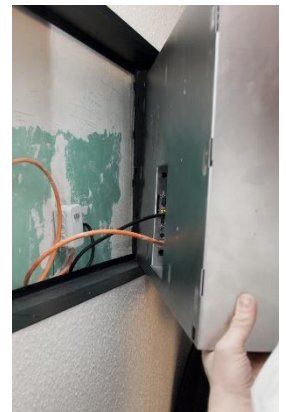


Flush mounting of MOStroN TSPC

Mounting instructions (for installation into a (stone)wall - with final plaster work)

5 Insert the display:

Before inserting the display, make sure that the lock is in the position „open“ (applies to all displays from 10,4“ to 32“. 42“ and larger: it is not necessary to pay special attention to the lockings. If you have any questions concerning the locking, please ask us!)



Connect the display to power and network cable.

In order to avoid cable damage, it is important that the cables are short enough or are positioned behind the frame.

Flush mounting of MOStroon TSPC

Mounting instructions (for installation into a (stone)wall - with final plaster work)

6 Insert the display:

Use the vacuum gripper to insert the display into the table-track.

Displays from 10,4“ to 32“ have to be inserted straightly at the top and pulled down to let it click into place.

Displays from 42“ have to be inserted sideways and clicked into place horizontally.

Tighten the locking mechanism if necessary (42“ and larger are locked automatically. Feel free to contact us if you have any questions concerning the locking mechanism.)

Ready!

